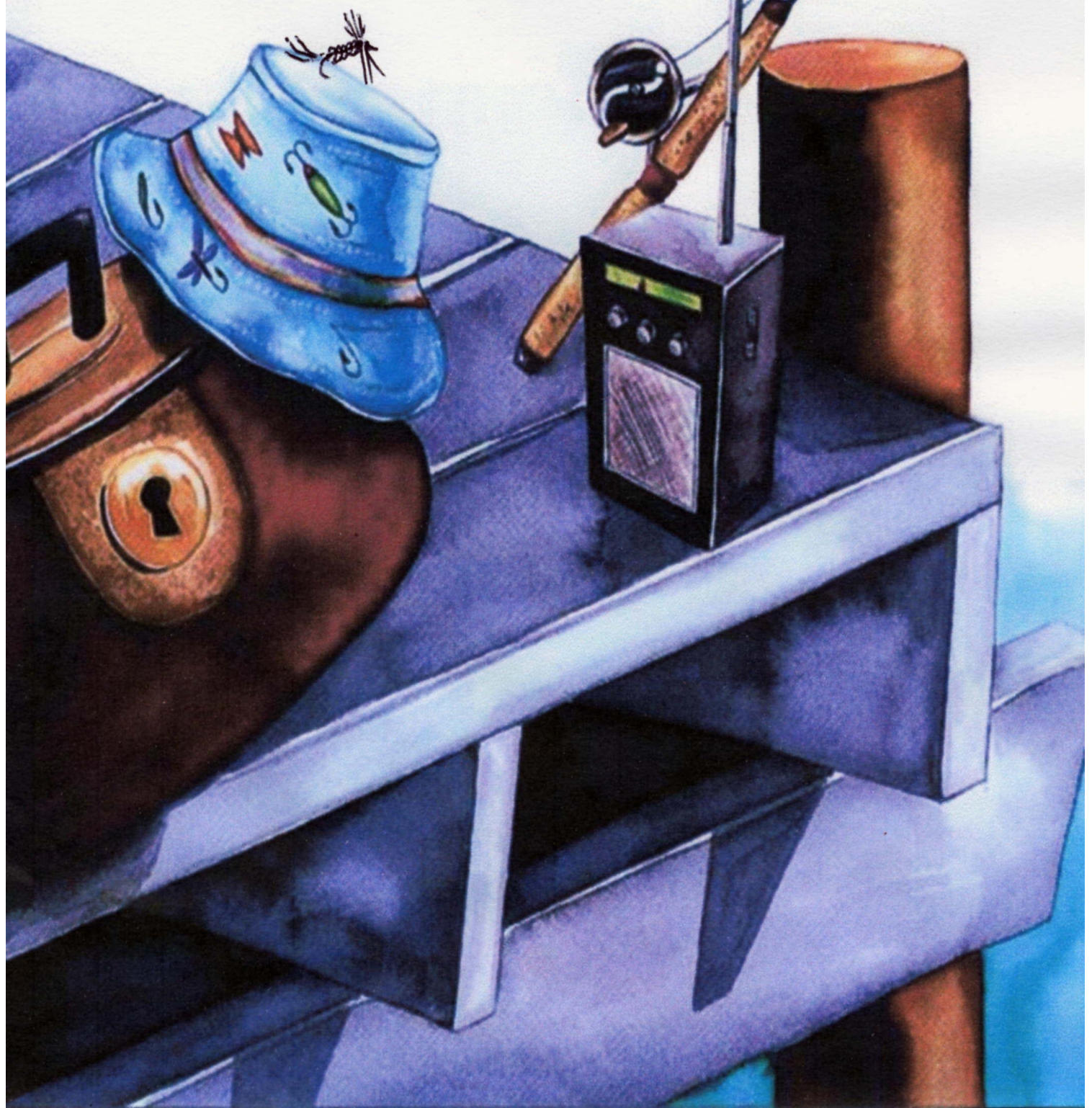


*Fly patterns
for the
discerning
fly tyer*

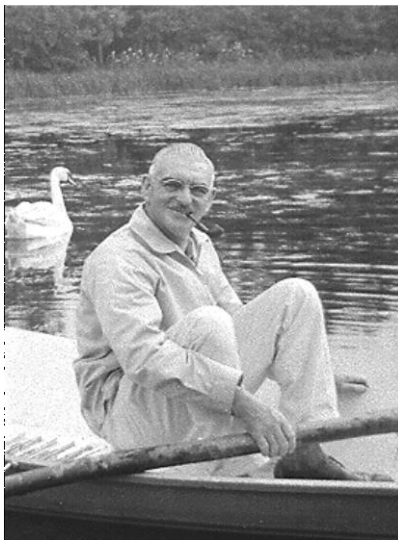


FLY PATTERNS FOR THE DISCERNING FLY TIER

This book contains Lists and Groups of Fly Patterns given to John W Jordan by his father Robert Alexander Jordan in the 1960's. The compiler of the complete list is not known, but was most likely a combination of the many skilled and specialist tiers who are recognised in each entry, some were probably his own and many of his fishing friends. It just seemed a great shame to have this information and not share it with other keen fishermen.

My father died on the 8th January 1986 aged 76. This re-typed document is produced in his memory by his son, John William Jordan.

Robert Alexander Jordan 1909 – 1986



FLY PATTERNS FOR THE DISCERNING FLY TIER

<u>INDEX</u>	<u>PAGE No.</u>
Front cover	
Introduction	1
Index	2
Artificials suggested to match the natural.	3 - 11
Artificials listed in alphabetical order.	12
Dressings listed in alphabetical order.	13 -52
Words that may need to be described in more detail.	53

FLY PATTERNS FOR THE DISCERNING FLY TIER

ARTIFICIALS SUGGESTED TO MATCH THE NATURAL

THE UPWING FLIES.

The Large Dark Olive – Hook Size 14.

Wet Pattern - Gold-ribbed Hare's Ear – Greenwell's Glory - Water Hen Bloa.

Dry Pattern - Rough Olive - Dogsboddy – Olive Quill - Imperial.

Spinner - Pheasant Tail Spinner – Red Spinner – Lunn's Particular.

Iron Blue Dunn - Hook Size 15 or 16.

Wet Pattern - Dark Watchet – Snipe and Purple.

Dry Pattern - Iron Blue Quill - Iron Blue.

Spinner - Houghton Ruby.

Medium Olive - Hook Size 15.

Wet Pattern - Greenwell's Glory – Olive Upright.

Dry Pattern - Blue Dun – Olive Quill – Olive Dun – Dogsboddy.

Spinner - Lunn's Particular – Pheasant Tail Spinner – Port Spinner.

Small Dark Olive – Hook Size 15 or 16.

Wet Pattern - Poult Bloa – Snipe Bloa – Blue Upright.

Dry Pattern - July Dun – Yellow Halo.

Spinner - Lunn's Particular – Pheasant Tail Spinner.

FLY PATTERNS FOR THE DISCERNING FLY TIER

Pale Watery – Hook Size 15.

Wet Pattern - Poult Bloa – Tup’s Indispensable.

Dry Pattern - Blue Quill – Little Marryat – Last Hope.

Spinner - Lunn’s Yellow Boy.

Yellow Evening Dunn – Hook Size 13 or 14.

Wet Pattern - -----

Dry Pattern - Yellow Dun.

Spinner - Lunn’s Yellow Boy.

Blue Winged Olive – Hook Size 14.

Wet Pattern - Gold Ribbed Hare’s Ear – Poult Bloa.

Dry Pattern - Orange Quill – B.W.O.

Spinner - Sherry Spinner (Skues) – Port Spinner – Sherry Spinner
(Wooley).

Small Spurwing – Hook Size 15 or 16.

Wet Pattern - Poult Bloa – Tup’s Indispensable.

Dry Pattern - Little Marryat – Last Hope.

Spinner - Pheasant Tail Spinner – Cream Spinner (Male) – Lunn’s
Yellow Boy.

FLY PATTERNS FOR THE DISCERNING FLY TIER

Large Spurwing – Hook Size 14.

Wet Pattern - -----

Dry Pattern - Tup's Indispensable.

Spinner - Large Spurwing Spinner – Cream Spinner (Male) –
Lunn's Yellow Boy.

Pale Evening Dun – Hook Size 14 or 15.

Wet Pattern - -----

Dry Pattern - Pale Evening Dun.

Spinner - Yellow Evening Spinner.

Late March Brown – Hook Size 12 or 13.

Wet Pattern - March Brown (various)

Dry Pattern - March Brown (various).

Spinner - Red Spinner.

March Brown – Hook Size 12 or 13.

Wet Pattern - March Brown (various)

Dry Pattern - March Brown (various).

Spinner - Red Spinner.

FLY PATTERNS FOR THE DISCERNING FLY TIER

Purple Dun - Hook Size 14 or 15.

Wet Pattern - Snipe and Purple.

Dry Pattern - Iron Blue Quill – Purple Dun.

Spinner - Houghton Ruby.

Claret Dun – Hook Size 14.

Wet Pattern - -----

Dry Pattern - Red Quill – Claret Dun

Spinner - Pheasant Tail Spinner.

Dusky Yellow Streak – Hook Size 14.

Wet Pattern - Dark Watchet.

Dry Pattern - Iron Blue Quill.

Spinner - Pheasant Tail Spinner.

Autumn Dun - Hook Size 12 or 13.

Wet Pattern - August Dunn.

Dry Pattern - August Dunn – March Brown.

Spinner - Red Spinner – Great Red Spinner.

FLY PATTERNS FOR THE DISCERNING FLY TIER

Olive Upright – Hook Size 14.

Wet Pattern - -----

Dry Pattern - Mole Fly – H.P.B. Yellow Upright.

Spinner - Pheasant Tail Spinner.

Large Brook Dun – Hook Size 12 or 13.

Wet Pattern - March Brown.

Dry Pattern - March Brown.

Spinner - Red Spinner – Great Red Spinner.

Pond Olive – Hook Size 14 or 15.

Wet Pattern - Greenwell’s Glory.

Dry Pattern - Olive Quill.

Spinner - Apricot Spinner.

Dark Olive – Hook Size 14.

Wet Pattern - As Large Dark Olive.

Dry Pattern - “

Spinner - “

FLY PATTERNS FOR THE DISCERNING FLY TIER

Large Green Dun – Hook Size 12 or 14.

Wet Pattern - -----

Dry Pattern - Large Green Dun.

Spinner - Large Green Spinner.

Turkey Brown – Hook Size 14.

Wet Pattern - -----

Dry Pattern - March Brown.

Spinner - Pheasant Tail Spinner.

MAY FLIES.

Various patterns – Hook Size 8 to 10. Long Shank.

Special Patterns - Green Drake Upright – Nevamis.

FLY PATTERNS FOR THE DISCERNING FLY TIER

STONEFLIES.

Large Stone Fly - Stonefly (Veniard) Hook – Long Shank Hook Size 8 to 10.

Small Brown - Partridge and Orange – Hook Size 14 or 15.

Medium Stonefly –February Red – Grey Duster – Hook Size 11 to 14.
Stonefly (Wooley).

February Red - Grey Duster. Hook Size 12.

Yellow Sally - Yellow Sally – Hook Size 14.

Early Brown - Grey Duster – Blue Upright Wet – Hook Size 12 to 14.

Willow-Fly - Winter Brown – Blue Upright Wet – Hook Size 12 to 14.
Grey Duster.

Needle-Fly - Dark Spanish Needle – Hook Size 14.

FLY PATTERNS FOR THE DISCERNING FLY TIER

SEDGE-FLIES

- Cinnamon Sedge** - Little Brown Sedge – Little Red Sedge –
Cinnamon Sedge – Hook Size 12 to 16.
- Medium Sedge** - John Storey – Medium Sedge – Brown Sedge
– Hook Size 10 or 12.
- Grey Sedge** - Silver Sedge – Hook Size 12.
- Sand Fly** - Sand Fly - Hook Size 14.
- Great Brown Sedge**- Brown Sedge – John Storey – Hook Size 8 to 12.
- Caperer**- Caperer – Hook Size 12 to 14.
- Black Sedge** - Black Sedge – Dark Sedge – Hook Size 14.
- Grannom** - Grannom (Henry) – Grannom (Powell) – Hook
Size 14 or 15.

OTHER FLIES

- Hawthorn** - Hawthorn – Hook Size 12.
- Cow Dung** - Cow Dung Fly – Hook Size 12.
- Oak Fly** - Oak Fly – Hook Size 12 to 14.
- Beetles** - Coch-y-bonddu – Governor – Soldier – Eric’s
Beetle – Hook Size 12 to 14.
- Crane Fly** - Daddy-Long-Legs (Hanna) – Daddy Long Legs
(West) – Hook Size 10 or 12.

FLY PATTERNS FOR THE DISCERNING FLY TIER

- Spiders** - Black Spider – Dun Spider – Red Spider – Hook Size 13 to 15.
- Blue Bottle** - Blue Bottle (Ronald's) – Blue Bottle (Hanna) – Hook Size 12 to 14.
- Moth** - Brown Moth – Ermine Moth – Hook Size 10 or 12.
- Anglers Curse** - Last Hope Little Marryat – Hook Size 17.
- Caterpillar** - Green Caterpillar – Arrow Fly – Hook Size 12 or 14.
- Freshwater Shrimp** - Pheasant Tail Nymph – Shrimp (Horsfall Turner) – Hook Size 14.
- Gravel Bed** - Gravel Bed – Hook Size 13 or 14.
- Black Gnat** - Black Gnat (Woolley) – Black Gnat (Henry) – Black Gnat (Halford) – Black Gnat (Dunne) – Dogsboddy – Hook Size 14 to 16.
- Ants** - Dusky Wood – Red Ant – Hook Size 14 to 17.
- Alder** - Alder Fly (Various) – Hook Size 12 to 14.
- Nymphs** - Pheasant Tail – P.V.C. Nymph – Hook Size 14 to 17.

FLY PATTERNS FOR THE DISCERNING FLY TIER

ARTIFICIALS LISTED IN ALPHABETICAL ORDER (D) - DRY. (S)- SPINNER). (W) – WET.

Alder fly (D)	Green Drake Upright (Jacques) (D)	Red Spider (Stewart) (W)
Apricot Spinner (D)	Greenwell's Glory (W)	Rough Olive (D)
Arrow-fly (D)	Grey Duster (D)	
August Brown (W)		Sandfly (Ronald) (D)
August Dun (D)	Hawthorn (D)	Sepia Dun (Kite) (D)
	Houghton Ruby (Lunn) (S)	Sherry Spinner (Skues) (S)
Black Gnat (Halford) (D)		Sherry Spinner (Woolley) (S)
Black Gnat (Henry) (D)	Imperial Kite (D)	Shrimp (Horsfall-Turner) (W)
Black Gnat (Dunne) (D)	Iron Blue (D)	Silver Sedge (D)
Black Gnat (Woolley) (D)	Iron Blue Quill (D)	Snipe Bloa (W)
Black Sedge (Thomas) (D)		Snipe & Purple (W)
Black Spider (Baillie) (W)	John Storey (D)	Soldier (Skues) (D)
Blue-Bottle (Hanna) (D)	John Storey (EricHorsfall-Turner)(D)	Stonefly (Veniard) (D)
Blue-Bottle (Ronald) (D)	July Dun (D)	Stonefly (Woolley) (D)
Blue Dun (D)		
Blue Quill (D)	Large Green Dun (D)	Tup's Indispensable (W)
Blue Upright (Austin) (W)	Large Green Spinner (S)	Tup's Indispensable (D)
Brown Moth (D)	Last Hope (Goddard)	
Brown Sedge (Thomas) (D)	Little Brown Sedge (D)	Winter Brown (D)
B.W.O. (Jacques) (D)	Little Marryat (Skues) (D)	Water Hen Bloa (W)
	Little Red Sedge (D)	
Caperer (Lunn) (D)	Lunn's Yellow Boy (S)	Yellow Dun (Harris) (D)
Cinammon Sedge (D)	Lunn's Particular (S)	Yellow Evening Spinner (Harris) (S)
Claret Dun (Harris) (D)		Yellow Sally (D)
Claret Spinner (Harris) (S)	March Brown (W)	Yellow Upright H.P.B. (Evens) (D)
Coch-y-bonddu (D)	March Brown (D)	Yellow Hale (Goddard) (D)
Cow-Dung Fly (Hanna) (D)	Mayfly Patterns :-	
Cream Spinner (Goddard) (S)	Green Drake Upright (Jacques) (D)	
	Nevamis (Goddard) (D)	
Daddy-Long-Legs (Hanna) (D)	Medium Sedge (Halford) (D)	
Daddy-Long-Legs (West) (D)	Mole Fly (D)	
Dark Sedge (Halford) (D)		
Dark Spanish Needle (D)	Oak Fly (D)	
Dark Watchet (W)	Olive Dun (Henry) (D)	
Dogsbody (D)	Olive Quill (D)	
Dun Spider (Stewart) (W)	Olive Upright (W)	
Dusky Wood (Skues) (D)	Orange Quill (D)	
Ermine Moth (Powell) (D)	Pale Evening (Kite) (D)	
Eric's Beetle (Horsfall-Turner)	Partridge & Orange (D)	
	Pheasant Tail (S)	
February Red (Adams) (D)	Pheasant Tail Nymph (Sawyer)	
	Port Spinner (Henry) (S)	
Gold Ribbed Hare's Ear (W)	Poult Bloa (W)	
Governor (D)	Purple Dun (Harris) (D)	
Grannom (Powell) (D)	P.V.C. Nymph (Goddard)	
Grannom (Henry) (D)		
Gravel Bed (D)	Red Ant (Lunn's) (D)	
Great Red Spinner (Woolley) (S)	Red Quill (D)	
Green Caterpillar (D)	Red Spinner (S)	

FLY PATTERNS FOR THE DISCERNING FLY TIER

DRESSINGS LISTED IN ALPHABETICAL ORDER

ALDER (DRY)

(Charles Kingsley)

Hook : 12 to 14
Tying Silk : Crimson
Body : Bronze Peacock Herl dyed Magenta.
Wings : Two pairs from speckled hen wing quill. Tied low over body and with dull or outer side of feather inside.
Hackles : Black cock tied in front of wings, collar fashion.

ALDER

(Roger Woolley)

Body : (1) Three strands of cock pheasant tail fibres of a good red colour.
Rib : Waxed claret silk.
(2) Thin bronze peacock herl, ribbed as No.1.
(3) Claret wool or silk ribbed with bronze peacock herl.
Wings : Dark brown grizzled cock hackle fibres tied low over the body.
Hackle : Black cock tied in front of wings.
Hackled Pattern : Bodies as for winged flies.
Hackle : A good dark blue grizzled dun cock hackle or a dark blue dun mixed with a speckled grouse hackle.

ALDER

(Leonard West)

Body : Peacock herl.
Thorax : Black ostrich herl.
Wings : Dyed grizzle blue dun cock hackle fibres.
Horns : Fibres from teal flank feathers.
Hackle : Black cock.

FLY PATTERNS FOR THE DISCERNING FLY TIER

APROCOT SPINNER (Oliver Kite)

Hook : 14
Tying Silk : Golden Olive.
Body : Swan primary herls dyed apricot.
Thorax : Same herls doubled and re-doubled.
Hackle : Palest honey dun.
Tails : Pale yellow.

ARROW FLY (DRY) (Courtney Williams)

Hook : 12 to 14
Body : Emerald green floss silk.
Hackle : White cock hackle tied palmer, ie from shoulder to tail.

AUGUST BROWN (WET)

Hook : 12 to 14
Tail : Two rabbit's whiskers.
Body : Light brown floss silk.
Rib : Yellow silk.
Hackle : Natural brown.
Wings : From cock pheasant.

AUGUST DUN (DRY)

Hook : 12 to 14
Tail : Fibres of dark ginger cock hackle.
Body : Brown floss silk or brown quill.
Rib : Yellow silk.
Wings : From mottled hen pheasant wing quill.
Hackle : Dark ginger cock hackle.

FLY PATTERNS FOR THE DISCERNING FLY TIER

BLACK GNAT (DRY) (Halford)

Male :

Hook : 16
Body : Undyed peacock quill with four close turns of black horsehair at shoulder.
Wings : Points of two pale blue dun cock hackles.
Hackle : Glossy black starling body feather.
Head : Two close turns of pale maroon horsehair.

Female :

Hook : 16
Body : Stripped peacock quill dyed jet black.
Wings : From pale starling wing quill, tied sloping back over body.
Hackle : Glossy black starling body feather.

BLACK GNAT (DRY) (Cliff Henry)

Hook : 16
Tying Silk : Black
Body : Black cock hackle, flue trimmed to 0.8mm / 1.0mm of stalk.
Wings : Pale starling, tied sloping back.
Hackle : Black cock short in flue.

Note :

On the above pattern, David Jacques suggests that a single turn of 1.6mm / 2.0mm wide silver tinsel be tied in at the tail end of the body. This has the effect of making the body appear smaller as it separates the bend of the hook from the body of the fly.

FLY PATTERNS FOR THE DISCERNING FLY TIER

BLACK GNAT (DRY) (J.W. Dunne)

Hook : 16 or 17
Tying Silk : Olive
Body : Black floss silk.
Rib : Black tying silk.
Wings : A mixed bunch, consisting of about twenty fibres cut from a hackle dyed bottle-green, and about ten fibres cut from a hackle dyed fiery red-wine.
Hackle : Several turns of darkest honey. Wind along and then clip till fibres stand-out from the shank a length equal to about two-thirds of the fly. Cut a narrow “V” out below.

BLACK GNAT (DRY) (Roger Woolley)

Hook : 16
Body : Black quill.
Hackle : Black cock's hackle, or starling's neck feather.

BLACK SEDGE (DRY) (Terry Thomas)

Hook : 10 to 14
Body : Black wool or chenille with black hackle tied in reverse so it slopes forward.
Wing : Black moose tied on flat with the cut end to the rear.
Hackle : Black cock.

BLACK SPIDER (WET) (James Baillie)

Hook : 12 to 14
Body : Brown waxed silk
Hackle : The black / green glossy feather from the neck of a cock starling.

FLY PATTERNS FOR THE DISCERNING FLY TIER

BLUE-BOTTLE (DRY)(Ronalds)

Hook : 12 to 14
Tying Silk : Brown – To be shown at head of fly.
Body : Bright blue floss silk.
Hackle : Short fibred black cock hackle wound down body.
Wings : From starling wing quill.

BLUE-BOTTLE (DRY) (Hanna)

Hook : 12
Body : Cork covered with smoky blue balloon rubber which should be bound tightly in the middle with strong tying silk to give the fly a bulky abdomen and a slightly smaller thorax.
Wings : Two blue dun hackle tips tied low over the body.
Hackle : Black cock tied in front of the wings.
Head : Red cellulose varnish to simulate the large reddish head of the fly.

BLUE DUN (DRY) (Roger Woolley)

Hook : 14 or 15
Tail : Dark olive cock hackle fibres.
Body : Dark peacock quill dyed yellow, or waxed olive tying silk ribbed with gold wire.
Wings : Dark starling wing quill or snipe wing quill.
Hackle : Dark olive cock.

or

Tail : Medium blue dun cock hackle fibres.
Body : Fur from mole or water rat spun on yellow silk.
Wings : Dark starling or snipe.
Hackle : Medium blue dun cock.

or

As above but with body formed by a well-marked stripped quill from the 'eye' of a peacock tail.

This version is called the "Blue Quill".

FLY PATTERNS FOR THE DISCERNING FLY TIER

BLUE UPRIGHT (WET) (Austin)

Hook : 14 to 16
Tying Silk : Purple.
Body : Undyed peacock's herl, stripped, taken from the side of the long stalk of the 'eye' feather, not in the 'eye'.
Hackle & Tail Whisks. From steely blue (nearly black) cock hackle. The hackle can be wound at head only or from the shoulder to tail.

BROWN MOTH (DRY)(Courtney Williams)

Hook : 10 to 14
Tying Silk : Orange
Body : Brown floss silk, rather thick.
Wings : From a dark owl's wing feather.
Hackle : Dark red cock hackle from shoulder to tail.

BROWN STANDARD SEDGE (DRY) (Terry Thomas)

Hook : 10 to 12
Body : Dark pheasant tail fibres wound on thick with a body hackle of ginger cock, tied in reverse so it slopes forward.
Wing : Grey deer hair tied flat with the cut end to the rear.
Hackle : Ginger cock.

FLY PATTERNS FOR THE DISCERNING FLY TIER

B.W.O. (MALE) (DRY)(David Jacques)

Hook : 14
Tying Silk : Orange.
Body : Plastic (P.V.C.) sheet dyed olive (or immersed in picric acid for half an hour) wound over ostrich herl dyed dirty yellow. The best results are by dyeing a grey ostrich feather. The air in the fibres of the herl is trapped when covered by the plastic, and gives the fly buoyancy. The final colour should be that of a ripening greengage.
Wings : Rather full, two pair from the wings of a coot.
Hackle & Whisks : Light olive, particularly the stem.

CAPERER (LARGE SEDGE FLY) (William Lunn)

Winged.

Hook : 12 to 14
Tying Silk : Crimson.
Body : Four or five strands from a dark turkey tail feather, and two strands from a swan feather dyed yellow. The swan feathers are to make a ring of yellow in the centre of the body.
Wings : From a coot's wing quill feather which has been bleached and dyed chocolate brown.
Hackles : One medium red hackle and one black cock hackle, wound together in front of the wings.
Hackled : Same as for winged fly with the wings omitted and hackles longer in fibre. This fly is also known as "Welshman's Button".

FLY PATTERNS FOR THE DISCERNING FLY TIER

CINNAMON SEDGE (DRY) (Roger Woolley)

Hook :	12 to 14
Body :	A strand from a cinnamon turkey tail feather.
Rib :	Gold wire.
Body Hackle :	Ginger cock (I like this hackle to be trimmed short, tapering the shape from shoulder to tail, - Veniard)
Wings :	Originally landrail was called for, but security of this bird has resulted in substitutes such as imitation landrail, brown hen wing's quill, etc.
Shoulder Hackle :	Ginger cock wound in front of wings.

Halford's dressing is virtually the same except that he advocates condor herl for the body dyed cinnamon, instead of the turkey feather.

CLARET DUN (DRY) (J.R.Harris)

Hook :	14
Tail :	Dark blue dun cock hackle fibres.
Body :	Dark heron dyed dark claret, or mole's fur and dark claret mohair mixed on claret tying silk.
Rib :	Fine gold wire.
Shoulder Hackle :	Dark blue dun cock, six or seven turns with a "V" clipped out underneath.

CLARET SPINNER (J.R.Harris)

Hook :	14
Tail :	Dark blue dun cock hackle fibres.
Body :	Very dark claret seal's fur spun on claret tying silk.
Hackle :	Blue dun or rusty dun cock's hackle.

FLY PATTERNS FOR THE DISCERNING FLY TIER

COCH-Y-BONDDU (DRY)

Hook : 12 to 14
Body : Two strands of bronze peacock herl.
Tip : Flat gold tinsel.
Hackle : Coch-y-Bonddu. (A red hackle with black centre and red tips.)

COW DUNG FLY (DRY) (T J Hanna)

Hook : 12
Body : Brownish yellow chenille.
Rib : Light green tying silk.
Wings : Tips of two darkish honey dun hackles tied on to lie flat over body.
Hackle : Dark honey dun.

COW DUNG FLY (DRY) (Roger Woolley)

Hook : 12 & 13
Body : A mixture of yellow, dark orange, plus a little green, seal's fur
Wings : Landrail or substitute tied low over body.
Hackle : Dark ginger tied in front of wings.

CREAM SPINNER (MALE) (John Goddard).

Hook : 15
Tying Silk : Cream.
Body : Baby seal fur, cream.
Rib : Thin gold wire.
Wings : Tips of two small pale blue dun cock, hackles tied "spent".
Hackle : Cream cock hackle tied sparsely, two turns only.
Tails : Pale blue cock fibres.

FLY PATTERNS FOR THE DISCERNING FLY TIER

DADDY-LONG-LEGS (DRY) (T J Hanna)

Hook : 10 to 12, long shank.
Legs : Six fibres from a cock pheasant's tail-knotted in the middle to form joints. Four fibres tied in to point back and two to point forwards.
Body : A thin piece of bicycle tube rubber, wound up the shank between the legs, to form a segmented body.
Wings : Two brownish cock hackle tips tied "spent".
Hackle : Natural red-brown cock hackle and wound behind the wings.

DADDY-LONG-LEGS (DRY) (Leonard West)

Legs : As for the T J Hanna pattern.
Thorax : Brown ostrich herl.
Body : Fawn raffia.
Rib : Fine gold wire.
Wings : Two red / grizzle (cree) cock hackle tips tied "spent".
Hackle : Red / grizzle cock wound behind wings.
Note : There are now ready formed hollow plastic bodies available, and make very realistic bodies for the "Daddy". The above dressing can be used with these bodies, using a short shank dry fly hook.

DARK SEDGE (DRY) (Halford)

Hook : 14
Body : Stripped condor quill dyed very dark maroon.
Body Hackle : Dark furnace cock.
Wings : Landrail or substitute dyed dark chocolate brown.
Hackle : Two dark furnace cock hackles tied in front of wings, covering wing roots.

FLY PATTERNS FOR THE DISCERNING FLY TIER

DARK SPANISH NEEDLE (DRY) (Pritt)

Hook : 14
Body : Orange silk.
Wings : A hackle from the darkest part of a brown owl's wing.
Head : Bronze peacock herl.

DARK SPANISH NEEDLE (DRY) (Roger Woolley)

Hook : 15
Body : Waxed orange or waxed claret tying silk.
Hackle : Small dark dun feather from the shoulder of a Starling's wing.

DARK WATCHET (WET) (Edmonds and Lee)

Hook : 14 to 16
Body : Mole fur spun on orange and purple tying silks, these silks to show alternate ribs when wound on.
Hackle : Small feather from a jackdaw's throat. This is a very dark silvery grey feather.

DOGSBODY (DRY) (Harry Powell)

Hook : 14 to 16
Body : Brown tying silk dubbed with camel-coloured dog's hair.
Seal's fur dyed this colour can be used as an alternative.
Hackles (2): Grizzle (Plymouth rock) cock's hackle, with a natural red cock hackle wound in the front.
Tail Whisks : Three strands from a cock pheasant's tail.

FLY PATTERNS FOR THE DISCERNING FLY TIER

DUN SPIDER (WET) (W. C. Stewart)

Hook : 14 & 15
Body : Waxed yellow tying silk.
Hackle : Short fibred dun feather from the under-part of a starling's wing, tied in at head and wound halfway down the body.

ERMINE MOTH (DRY) (Reverend Edward Powell)

Hook : 10 to 14
Tag : A loop of two orange wool tied in flat, protruding quarter of an inch (6mm) beyond the bend of the hook and then cut off so as to make a short fork.
Body : White rabbit fur.
Rib : One strand of black knitting wool or coarse black thread.
Hackle : Two large grey speckled partridge back feathers.

ERIC'S BEETLE (Eric Horsfall-Turner).

Hook : 8
Body : Bronze peacock over a double thickness of yellow wool, the wool left showing for two turns at the rump.
Hackle : Black hen, two turns.

FLY PATTERNS FOR THE DISCERNING FLY TIER

FEBRUARY RED (DRY) (Roger Woolley)

Hook : 13 Long shank
Body : A dark brown quill from the stem of a peacock's tail, dyed dark claret, or dark claret mohair.
Wings : Two dark brown grizzled (cree) cock hackles tied flat over the back.
Hackle : Dark blue dun cock, grizzled if possible.

Hackled Pattern.

Body : As for above.
Hackle : A dark rusty blue cock.

GOLD RIBBED HARES EAR (WET)

Hook : 14 to 16
Whisks : Three long strands of hare's body fur.
Body : Dark hair from the root of a hare's ear spun on yellow silk.
Rib : Fine flat gold tinsel.
Hackle : The longer fibres of the body fur picked out with a dubbing needle, or longer body hairs spun on the tying silk and worked as a hackle.
Wings : (If required) from a starling's wing primary feathers.

GOVERNOR (DRY) (T.C.Harland)

Hook : 14
Tip : Scarlet silk.
Body : Bronze peacock herl.
Wings : From hen pheasant wing primary feathers.
Hackle : Light red or ginger cock's hackle.

FLY PATTERNS FOR THE DISCERNING FLY TIER

GRANNOM (DRY) (Reverend Edward Powell)

Hook : 14
Tying Silk : Green.
Body : Mole fur dyed in picric acid.
Hackle: Two partridge brown back feathers, as light as possible.

GRANNOM (DRY) (Cliff Henry)

Hook : 15
Tying Silk : Yellow.
Body : Har's ear ribbed with fine gold wire – two or three turns of green silk at tail.
Wings : Fawn mallard primaries tied sloping back over the body.
Hackle : Light ginger cock, short in the flue.

GRAVEL BED (DRY) (Ronalds)

Hook : 12
Body : Dark dun or lead coloured silk.
Wings : From a woodcock's wing feather, tied sloping over the body.
Hackle : A black cock's hackle fairly long fibre, wound twice only.
The fibres of the hackle should be about twice the length of the hook.

GRAVEL BED (DRY) (Dr. Pryce-Tannatt)

Hook : 12
Body : Fibres from the blue-grey feather of a heron's wing.
Hackle (2) : A black cock's hackle wound as for the Ronald's pattern, with a partridge brown back feather wound in front.

FLY PATTERNS FOR THE DISCERNING FLY TIER

GREAT RED SPINNER (J. R. Harris)

Hook : 12 to 13
Tail Whisks : Fibres from a dark rusty dun or red cock hackle.
Body : Dark red or claret seal's fur on claret tying silk.
Rib : Gold wire.
Hackle : Dark rusty dun cock, tied half spent.

GREAT RED SPINNER (Roger Woolley)

Tail Whisks : Fibres from a red game cock hackle.
Body : Red seal's fur.
Rib : Gold wire.
Wings : Tips of two medium blue dun cock hackles tied spent, or medium blue dun cock hackle tied spent.
Hackle : Red cock hackle.

GREEN CATERPILLAR (DRY) (Courtney Williams)

Hook : 12 to 14.
Body : Emerald green wool.
Hackle : Stiff emerald green cock hackle wound the length of the body and clipped short.

GREENWELL'S GLORY (DRY OR WET)(Canon William Greenwell)

Hook : 14 to 16.
Body : Yellow silk waxed with black cobbler's wax to give it a greenish olive hue.
Wings : From a blackbird's wing feathers.
Hackle : Light Coch-y-Bonddu or Furnace hackle.
A rib of fine gold wire is usually added nowadays, but the above is the original pattern.

FLY PATTERNS FOR THE DISCERNING FLY TIER

GRENNWELL'S GLORY continued.

Hackled Pattern :

Tail Whisks : Fibres from a furnace cock's hackle.
Body : Yellow tying silk – well waxed.
Hackles (2) : A light Coch-y-Bonddu or Furnace cock's hackle
 and a medium blue dun cock's hackle.

GREY DUSTER (DRY)(Courtney Williams)

Hook : 12 to 14, larger for lakes.
Tying Silk : Brown.
Body : A dubbing of light rabbit fur, sometimes with a
 little of the under-fur added.
Hackle : A badger cock's hackle with a well-marked black
 centre and white list.

HAWTHORN (DRY) (Courtney Williams)

Body : Two strands from a black turkey tail feather, tied
 and wound so that the shiny black quill shows up
 well. The two ends of the strands are tied back to
 represent the legs of the fly.
Hackle : From a jay's primary wing feathers, as pale as
 possible.

HOUGHTON RUBY (DRY) (William Lunn)

Hook : 16.
Tying Silk : Crimson.
Tail : Three fibres from a white cock hackle.
Body : Rhode Island Hackle stalk dyed crimson.
Wings : Two light blue dun hen tips, using feathers taken
 from the breast or back, set on flat.
Hackle : Natural bright red.

FLY PATTERNS FOR THE DISCERNING FLY TIER

IMPERIAL (DRY) (Oliver Kite)

Hook : 14 or 15.
Tying Silk : Purple.
Body : Undyed heron primary herls.
Thorax : Same herls doubled and redoubled.
Rib : Gold wire.
Tails : Grey brown in spring, later honey dun.
Hackle : Honey dun.

IRON BLUE (DRY)

Hook : 16.
Body : Stripped peacock quill dyed purple or claret.
Wings : Cock blackbird, or starling dyed inwardly blue.
Hackle : Dark blue dun cock's hackle.
Tail Whisks : Fibres from a pale blue dun cock's hackle.
or
Body : Dark peacock quill dyed olive.
Wings : As above.
Hackle : Dark brown olive cock's hackle.
Whisks : Fibres from a rusty dun cock's hackle.

Hackled Pattern.

Body : Purple or claret quill.
Hackle : Dark blue dun cock's hackle.
Tail Whisks : Fibres of pale blue dun cock's hackle.

DARK WATCHET (NORTH COUNTRY WET PATTERN)

Hook : 16.
Body : Mole fur dubbed on orange and purple tying silk,
which should be twisted together to make alternate
ribbings.
Hackle : Small feather from a jackdaw's throat.

FLY PATTERNS FOR THE DISCERNING FLY TIER

JOHN STOREY (DRY)

Hook : Any size.
Tail : Fibres of red cock's hackle.
Body : Thin peacock herl.
Rib : Scarlet silk.
Hackles : Red cock hackle.
Wings : Grey mallard flank feather fibres.

JOHN STOREY (DRY)(Eric Horsfall-Turner)

Hook : 16.
Body : Bronze peacock.
Hackle : Dark red cock.
Wing : Forward-tied tuft of mallard breast feather.

JULY DUN (DRY) (Roger Woolley)

Hook : 12 to 14.
Tail whisks : Medium olive cock hackle fibres.
Body : Heron herl dyed yellow.
Rib : Gold wire.
Wings : From a starling's wing primary feathers, as dark as possible.
Hackle : Medium olive cock's hackle.

Hackled Pattern

Body & Tail
Whisks : As for winged fly.
Hackle : Darkish dun cock's hackle.

FLY PATTERNS FOR THE DISCERNING FLY TIER

LARGE GREEN DUN (DRY) (John Veniard)

Hook : 12 to 14.
Tail Whisks : Fibres from a dark dun cock's hackle.
Body : Greenish grey seal's fur or herl from a heron's wing quill dyed light green.
Rib : Dark brown or black tying silk.
Hackles (2) : Dyed green cock's hackle, with a longer dyed green gizzle cock's hackle in front.

LARGE GREEN DUN (DRY) (Leonard West)

Hook : 12 to 14
Tail Whisks : Fibres from a green cock's hackle.
Body : Green quill.
Rib : Gold wire.
Thorax : Dark green dubbing or herl.
Wings : From a starling's wing primary feathers.
Hackle : Dyed green cock's hackle.

LARGE GREEN SPINNER (John Veniard)

Hook : 13 or 14.
Tail Whisks : Two fibres from a dark dun cock's hackle, fairly long.
Body : Stripped peacock quill dyed green, well marked.
Wings : Grizzle cock hackle tips tied spent, not too heavily marked.
Hackle : Cock's hackle dyed green, short and stiff fibred.

LAST HOPE (DRY) (John Goddard)

Hook : 17 or 18 up eye fine wire.
Tying Silk : Pale yellow.
Body : Goose primary or condor herls budd colour.
Hackle : Green cock very short in flue.
Tails : Honey dun cock, six fibres.

FLY PATTERNS FOR THE DISCERNING FLY TIER

LITTLE BROWN SEDGE (DRY) (Courtney Williams)

Hook : 14.
Body : Orange tying silk dubbed with light brown wool.
Rib : Fine gold wire.
Body Hackle : Short fibred natural red cock hackle from shoulder to tail.
Wings : From wing feathers of Rhode Island Red hen.
Front Hackle : Natural red cock's hackle, tied in front of wings over wing roots.

LITTLE MARRYAT (DRY) (Skues)

Hook : 15 or 16.
Tying Silk : White or pale straw.
Tail Whisks : Creamy dun.
Body : Cream fur from a baby seal.
Wings : Pale starling wing feather.
Hackle : Creamy dun.

LITTLE RED SEDGE (DRY) (Skues)

Hook : 14.
Tying Silk : Hot orange, well waxed with brown wax.
Body : Dark fur from hare's ear.
Rib : Fine gold wire, binding down the body hackle.
Body Hackle : Short fibred, deep red cock's hackle from shoulder to tail.
Wings : Brown hen's wing quill roller and tied sloping well back over the body.
Front Hackle : Deep red cock tied in front over wing roots. Five or six turns.

FLY PATTERNS FOR THE DISCERNING FLY TIER

LUNN'S YELLOW BOY (SPINNER) (William Lunn)

Hook : 13 – 16.
Tying Silk : Light orange.
Tail Whisks : Pale buff cock hackle fibres.
Body : White hackle stalk dyed medium yellow.
Wings : Two light buff cock hackle tips put on the flat.
Hackle : Light buff.

LUNN'S PARTICULAR (SPINNER) (William Lunn)

Hook : 14 – 16.
Tying Silk : Crimson.
Tail Whisks : Fibres from a large Rhode Island Red cock hackle.
Body : Undyed hackle stalk of a Rhode Island Red.
Wings : Two medium blue dun cock hackle tips put on flat.
Hackle : Medium Rhode Island Red cock hackle.

MARCH BROWN (WET) (John Veniard)

Winged Wet Fly (Northern dressing)

Hook : 13 – 11.
Tail : Fibres from a brown speckled partridge hackle or tail feather.
Body : Sandy fur from a hare's neck, or brown seal's fur.
Rib : Yellow silk or gold wire.
Hackle : Brown partridge.
Wings : Fibres from a speckled partridge tail feather.

Winged Wet Fly – Male.

Tail : Two strands of brown speckled partridge feather.
Body : Dark hare's fur from the ear.
Rib : Yellow tying silk or gold wire.
Hackle : Brown speckled partridge partridge, or brown grizzled (cree) hen's hackle.
Wings : Mottled secondary feather from hen pheasant's wing.

FLY PATTERNS FOR THE DISCERNING FLY TIER

Winged Wet Fly – Female.

Tail & Hackle : As male.
Body : Ginger hare's fur from neck.
Rib : Gold wire.
Wings : Same as for male but lighter in colour.

Hackled Wet Fly.

Tying Silk : Hot orange.
Body : From a hare's poll, dyed hot orange.
Hackle ; A snipe's rump feather.

MARCH BROWN SPIDER.

Tail : Two strands from a speckled partridge tail.
Body : Dark hare's ear, mixed with a little claret wool or seal's fur.
Rib : Yellow or primrose tying silk.

MARCH BROWN SPIDER. (WELSH PATTERN)

Body : As above.
Rib : Silver.
Hackle : As above.
It is understood that the name of this pattern to be Petrisen Corf Blewyn Yagyfarnog.

MARCH BROWN NYMPH.

Tail : Two short strands of a cock pheasant's tail, or fibres of brown mallard shoulder feather.
Body : Herls from a cock pheasant's tail.
Rib : Gold wire.
Thorax : Hare's ear fur at shoulder.
Wing Cases : From a woodcock wing feather (some times omitted).
Legs : One turn of a small brown speckled partridge hackle.

FLY PATTERNS FOR THE DISCERNING FLY TIER

Winged Dry Fly (Male)

Tail : Fibres from a grizzled (cree) cock's hackle.
Body : Hare's ear fur, mixed with a very small amount of yellow seal's fur.
Rib : Yellow tying silk.
Wings : Darkish mottled hen pheasant or cock pheasant wing quill, tied upright.
Hackle : Brown grizzled (cree) cock's hackle – stiff and bright.

Winged Dry Fly (Female)

Tied as for the male, but with wings of a lighter shade.

Hackled Dry Fly

Tail : Stiff fibres from a brown grizzled (cree) cock's hackle.
Body : As for winged dry flies.
Hackles : Same as for winged dry flies, but with the addition of a bright red game cock hackle (short in fibre) tied behind the cree hackle. Alternatively, brown speckled partridge hackle wound mixed with a darkish bright blue dun cock's hackle.

MARCH BROWN VARIATIONS.

Silver March Brown

Tail : Two fibres from a brown speckled partridge hackle or speckled partridge tail feather.
Body : Flat silver tinsel.
Rib : Oval silver.
Wings : From a hen pheasant's mottled secondary wing feather.

FLY PATTERNS FOR THE DISCERNING FLY TIER

Purple March Brown

A pattern of recent innovation, very popular in Scotland and practically always fished wet. The only deviation from the standard pattern is its purple wool or seal's fur body, ribbed with yellow silk or gold wire.

MAYFLIES

(John Veniard)

Spent Mayfly

Hook : 10 – 12 long shank.
Tail : Three cock pheasant tail fibres.
Body : White floss silk or natural raffia.
Wings : Dark blue dun hackle points tied “spent”.
Hackle : Badger fur hackle.

Fan Wing Mayfly

Hook : 10 – 11 long shank.
Tail : Three fibres from a cock pheasant tail.
Body : Yellow raffia.
Rib : Oval gold tinsel.
Wings : Duck breast feathers back to back, dyed yellow.
Hackles : 1st, yellow cock hackle.
2nd, grey partridge back feather, or a grizzle cock hackle.

Shaving Brush Mayfly

This fly derives its name from the peculiar wing formation, and is a good imitation of the hatching fly. The “Barret’s Brown” is also of the same type, and the “Grey Wulf”, both dressings being given here.

Hook : 10 – 11 long shank.
Tail : Three long black cock hackle fibres.
Body : Kapok.
Rib : Black tying silk.
Wings : A large grizzle hackle wound and divided to slope forward.
Hackle : Black cock’s hackle.

FLY PATTERNS FOR THE DISCERNING FLY TIER

Barret's Brown Mayfly

Hook :	10 – 11 long shank.
Tail :	Three long black cock hackle fibres.
Body :	Brown raffia.
Rib :	Oval gold tinsel.
Wings :	Fibres from a brown bucktail, divided and sloping forward.
Hackle :	1 st medium olive cock's hackle. 2 nd (nearest to eye) hen pheasant neck feather.

Grey Wulf Mayfly (Hair winged)

Hook :	10 – 11 long shank.
Tail :	Fibres from a brown bucktail.
Body :	Blue-grey seal's fur.
Wings :	Brown fibres from a bucktail, divided and sloping forward.
Hackle :	Blue dun cock's hackle.

When the above is tied onto a size 15 hook, and using fibres from a brown barred squirrel tail for the wings, this makes an excellent representation of smaller hatching nymphs.

French Partridge Mayfly

This is a mayfly of the "Straddle Bug" type, as also is the pattern immediately following.

Hook :	10 – 12 long shank.
Tail :	Three fibres from a cock pheasant tail

Straddle-Bug Mayfly (Summer duck)

Hook :	10 – 12 long shank.
Tip :	Very fine gold oval or twist tinsel.
Tail :	Two or three fibres from a black cock's hackle.
Body :	Natural raffia.
Rib :	Brown tying silk.
Hackles :	1 st Orange cock's hackle 2 nd Brown speckled summer duck feather.
Head :	Bronze peacock herl.

FLY PATTERNS FOR THE DISCERNING FLY TIER

Spent Mayfly

This is a favourite which has been used with much success during the height of the hatch.

Hook :	10 – 11 long shank.
Tail :	Three fibres from a cock pheasant tail.
Body :	Natural raffia.
Rib :	Oval silver tinsel.
Wings :	A very stiff black or dark blue dun cock's hackle wound in the normal way, the fibres then being split into two equal halves and tied "spent".
Hackle :	None, the design relies upon the stiffness of the wings to float the fly, but if a hackle is preferred, it is recommended a short fibred stiff badger hackle be used.

MAYFLIES (WET AND NYMPHS) (John Veniard)

Mayfly Nymphs

These should be tied fairly heavily as the mayfly nymph is a good sized insect. There are many patterns but the following three should meet most requirements.

No.1

Hook :	11 -9 long shanked.
Tail :	Three short strands from a peacock pheasant's tail feather.
Body and thorax :	Brown olive seal's fur.
Rib :	Oval gold tinsel.
Wing Case :	From a hen pheasant's tail feather, dark as possible.
Legs :	Brown partridge back feather.

No.2

Tail :	As for No.1.
Body :	Three turns at tail end of dirty yellow seal's fur. The remainder and thorax of brown olive seal's fur.
Rib :	Yellow silk, thicker than the normal tying silk.
Legs :	A mottled feather from a hen pheasant's neck.

FLY PATTERNS FOR THE DISCERNING FLY TIER

No.3

Tail : As for Nos. 1 and 2.
Body and Thorax : Pale buff seal's fur.
Rib : Oval gold tinsel.
Wing Case : As for Nos. 1 and 2.
Legs : Dark brown grouse hackle.

Wet Mayflies

More often than not these are used at the commencement of the rise while the fly is hatching, and should therefore be fished semi-submerged.

No.1

Hook : 11 – 9 long shanked.
Tails : Three strands from a cock pheasant's tail.
Body : Dyed yellow lamb's wool.
Rib : Oval gold tinsel.
Legs : Hen pheasant neck feather dyed yellow, or uddyed.
Wings : Speckled grey mallard feather dyed yellow.

No.2

Tails : As for No.1.
Body : As for No.1.
Rib : As for No.1.
Legs : Ginger cock's hackle, dyed yellow.
Wings : Speckled grey mallard feather dyed greenish yellow.

No.3

Tails : As for Nos.1 and 2.
Body : Buff yellow floss silk.
Rib : Oval gold tinsel.
Legs : Brown grouse hackle.
Wings : Grizzle cock hackle dyed greenish yellow.

FLY PATTERNS FOR THE DISCERNING FLY TIER

GREEN DRAKE UPRIGHT (DRY) (David Jacques)

Hook : A "Mayfly hook, as light as possible.
Tying Silk : Olive or straw colour.
Body : Build up shape with floss silk, then cover with natural raffia.
Head Hackle : Two short stiff cock hackles dyed green drake.
Tail Hackle : Two or more long cock hackles, as stiff as possible, same shade as head hackles.

GREY DRAKE UPRIGHT (David Jacques)

As above, but with the hackles to be dyed medium grey.

NOTE : These two flies were particularly good according to RAJ when used in the month of July at Middleton-in-Teesdale, Co.Durham, England, UK. on the river Tees.

The only variation to the above was that the Body was made from yellow floss silk and the wings were dyed green.

NEVAMIS MAYFLY (DRY) (John Veniard)

Hook : 8 -long shank fine wire.
Tying Silk : Yellow.
Body : Baby seal fur wound thickly – body hackle large honey cock tied in at tail and wound to shoulder and then clipped to $\frac{3}{4}$ " (20mm) of body at shoulder, sloping to $\frac{1}{8}$ " (3mm) at tail.
Rib : Oval gold tinsel.
Wings : V-shape hackle fibre wings using a pale blue dun cock $\frac{1}{2}$ " (12mm) fibres.
Hackle : Small furnace cock $\frac{1}{2}$ " (12mm) fibres.
Tail : Three long pheasant tail fibres.

FLY PATTERNS FOR THE DISCERNING FLY TIER

MEDIUM SEDGE (DRY) (Halford)

Hook : 11 – 13.
Body : Unstripped condor herl dyed medium cinnamon.
(or cinnamon turkey tail fibres as an alternative.
Veniard).
Body Hackle : Short fibred ginger cock hackle.
Wings : Well-coloured red hen wing quill.
Front Hackle : Ginger cock wound in front of wings over wing
roots.

MOLE-FLY (DRY)

Although predominately popular in other parts of Europe (particularly in France), this fly is of English origin, taking its name from the river Mole in Surrey. Very effective on slow flowing rivers, where its forward style of winging enables it to cock up very nicely. It will take fish during a hatch of Olives, Mayflies or Sedges.

Hook : 14 – 16.
Body : Dark olive tying silk.
Rib : Gold wire.
Wings : Mottled hen pheasant tied forward.
Hackle : Red / black (furnace) wound from the shoulder to
tail).

OAK FLY (DRY) (Roger Wooley)

Hook : 11.
Body : Orange raffia.
Rib : Dark quill from one stem of a peacock tail,
stripped.
Wings : Woodcock wing quill, or two tips of small dark
grizzled cock hackles, tied low over back.
Hackle : Furnace cock.

FLY PATTERNS FOR THE DISCERNING FLY TIER

OLIVE DUN (DRY) (Cliff Henry)

Hook : 16 UE (up-eye)
Tying Silk : Green.
Tail : Grey-blue whisks.
Body : Hen hackle stalk from light olive cape.
Wings : Mallard duck quill feather.
Hackle : Pale gingery olive.

OLIVE QUILL (DRY)

Hook : 14 – 16.
Tail Whisks : Fibres from a medium olive cock hackle.
Body : Stripped peacock quill from ‘eye’ part of tail, dyed olive.
Wings : Dark starling wing quill feather.
Hackle : Medium olive cock hackle.

OLIVE UPRIGHT (WET)

Hook : 14 – 15.
Tail Whisks : Fibres from an olive cock hackle.
Body : Stripped peacock quill from ‘eye’ of tail dyed yellow.

ORANGE QUILL (DRY) (Skues)

Hook : 13 – 14.
Tying Silk : Orange.
Tail Whisks : Fibres from a natural bright red cock hackle.
Body : Pale condor quill, stripped and dyed hot orange.
(Condor is difficult to strip and therefore stripped ostrich herl is equally effective – Veniard)
Wings : Pale starling wing quill, rather full.
Hackle : Natural bright red cock hackle.

FLY PATTERNS FOR THE DISCERNING FLY TIER

PALE EVENING DUN (DRY)

(Oliver Kite)

Hook : 15.
Tying Silk : White.
Body : Grey goose, primary herls.
Thorax : Same herls doubled and re-doubled.
Tails : Cream cock.

PARTRIDGE AND ORANGE (DRY)

Hook : 14 – 15.
Body : Orange silk.
Hackle : Speckled feather from a partridge's back.
Rib : (Optional) Gold wire.

PHEASANT TAIL (NYMPH)

(Frank Sawyer)

Hook : 16 – 12 D/E (Down Eyed).
Tails, Body &
Wing Cases. Cock pheasant centre tail fibres, and fine copper wire. The cock pheasant tail should be from a mature bird with the edges of the tail as deep a red as possible. The wire should also approximate this colouring.

Construction.

The copper wire is wound on to the hook to form a core for the body, and should represent the shape of the nymph, i.e. a hump to represent thorax, and then tapering to the tail. This acts as ballast and general appearance.

Take four fibres from the cock pheasant tail, and tie them in with wire so that the tips of the fibres form the tail whisks. Now wind both wire and feather fibres evenly up to the eye of the hook. Fasten with one turn of the wire, then lap the feather fibres backwards – forwards – then backwards again, to form the characteristic nymph 'hump' at the thorax. The wire is not used during the lapping, but should be kept separate from the fibres and just brought backwards or forwards as the case may be, to secure each lap of the

FLY PATTERNS FOR THE DISCERNING FLY TIER

fibres. The finish should be made with two half hitches of the wire behind the eye of the hook.

No hackle is used, and it will be observed that it is possible to make this pattern without the use of tying silk either! In spite of its simplicity this is one of the most popular and successful patterns ever evolved.

PHEASANT TAIL (SPINNER) (Skues)

Hook : 14 – 16.
Tying Silk : Hot orange.
Tail Whisks : Two or three strands of honey dun cock spade feather.
Body : Two or three strands of rich coloured ruddy fibres from the centre of the cape.

PORT SPINNER (Cliff Henry)

Hook : 14 – 16.
Tying Silk : Crimson.
Tail : Pale blue cock fibres.
Body : Hen hackle stalk from dark Rhode Island Red.(Port wine colour).
Wings : Pale blus dun hackle points tied “spent”.
Hackle : Two turns of light olive.

POULT BLOA (WET) (Roger Woolley)

Same dressing as below, but using ginger hare’s fur, or omitting the fur altogether.

POULT BLOA (WET) (Traditional)

Body : Yellow silk dubbed with fur from a red squirrel.
Hackle : Slaty blue feather (poult) from under the wing of a young grouse.

FLY PATTERNS FOR THE DISCERNING FLY TIER

PURPLE DUN (DRY) (J R Harris)

Hook : 14 – 15.
Tail : Fibres from a dark blue dun cock's hackle.
Body : Heron herl dyed purple, or mole's fur spun on purple tying silk.
Hackles : (2) Black cock's hackle with a dark blue dun wound through it.

P.V.C. NYMPH (John Goddard)

Hook : 16 – 12 D/E (Down Eyed).
Tying Silk : Yellow.
Body : The shank of the hook is covered with a fine copper wire. Start at the eye and work along, building up a thorax just behind the eye by winding the wire more thickly at this point. Continue to the bend of the hook and use wire to tie in body materials, then cut. Begin with a thin strip of P.V.C. followed with three golden olive condor herls. The points of these should protrude $\frac{1}{8}$ " (3mm) at the rear to form tails. These are then wound over wire to form body up to the eye. Tie in with yellow silk at the eye and wind silk down to the back of the thorax, then wind in P.V.C. from tail at eye and tie in three blackish pheasant tail fibres: these are then doubled and re-doubled over the top of the thorax to form a hump, to imitate wing cases. To imitate the translucence of some nymphs, sparsely wind silver tinsel over the herl of the body but under the P.V.C.

RED ANT (DRY) (William Lunn)

Hook : 15 – 17.
Tying Silk : Deep orange.
Body : Wind tying silk to form shape of ant's body.
Wings : Fibres from a large white cock's hackle tied in to lie close over body. Cut off tips to give required length.
Hackle : Short fibred stiff bright red game cock's hackle.

FLY PATTERNS FOR THE DISCERNING FLY TIER

RED QUILL (DRY)

Hook : 14.
Tail Whisks : Three fibres from a natural bright red cock's hackle.
Body : Stripped quill from 'eye' part of peacock tail, ensuring that the well marked light and dark brands prevail.
Wings : From starling's wing quill.
Hackle : Natural bright red cock's hackle, alternatively, pale blue dun cock's hackle, without wings.

RED SPINNER

(Courtney Williams)

Hook : 12 – 14.
Tail Whisks : Fibres from a natural bright red cock's hackle.
Body : Red silk.
Rib : Gold wire.
Wings : From starling's wing quill.
Hackle : Natural bright red cock's hackle.

RED SPINNER

(Roger Woolley)

Hook : 12 – 14.
Tail Whisks : Fibres from a bright red cock's hackle
Body :
1) Red dyed horsehair on the bare hook.
2) Celluloid over red tying silk.
3) Red seal's fur ribbed with gold wire.
Wings : Glassy pale blue dun cock hackle fibres or two small pale blue cock hackle tips, both tied "spent".

RED SPINNER

(Skues).

(Hackled Pattern)

Tying Silk : Hot orange.
Tail Whisks : Three fibres from a steely blue dun cock hackle.
Body : Crimson seal's fur.

FLY PATTERNS FOR THE **DISCERNING FLY TIER**

Rib : Fine gold wire.
Hackle : Bright steely blue dun cock's hackle.

RED SPINNER (WET) (Stewart)

Hook : 14 – 15.
Body : Waxed yellow tying silk.
Hackle : (Run halfway down the body)- Small feather from the outside of a landrail's wing, or a small natural red hen's hackle.

ROUGH OLIVE (DRY) (Roger Woolley)

Hook : 13 – 14.
Tail Whisks : Dark olive cock hackle fibres.
Body : Heron's herl dyed olive.
Rib : Fine gold wire.
Wings : Dark starling or hen blackbird wing quill.
Hackle : Dark olive cock's hackle.

SAND FLY(DRY) (Ronalds)

Hook : 14.
Body : Sandy – coloured fur from a hare's neck spun on silk of the same colour or as near as possible.
Wings : From a landrail's wing quill (or substitute) tied rather full.
Hackle : Ginger cock's hackle. (Hen's hackle for the Wet Fly).

SEPIA DUN (DRY) (Oliver Kite)

Hook : 13.
Tying Silk : Brown.
Body : Dark undyed heron primary herls.
Thorax : Same herls doubled and re-doubled.
Rib : Gold wire.

FLY PATTERNS FOR THE DISCERNING FLY TIER

Tails : Black cock.
Hackle : Reddish black cock.

SHERRY SPINNER (SPINNER) (Skues)

Hook : 14.
Tail Whisks : Three fibres from a pale honey dun cock's hackle.
Body : Amber seal's fur (Skues advocates a mixture of orange, light orange and green seal's fur with a small fine amount of fur from a hare's poll added.
Rib : Fine gold wire.
Hackle : Palest honey dun, with a darkish centre if possible.

SHERRY SPINNER (Roger Woolley)

Tail Whisks : Pale ginger cock hackle fibres.
Body : Pale gold quill or gold coloured floss.
Wings : Glassy blue dun cock hackle fibres, or two small pale blue cock hackle tips, both tied "spent".
Hackle : Pale ginger cock's hackle.

SHRIMP (WET) (Eric Horsfall-Turner)

Hook : 11 D/E (Down Eyed)
Body : Orange DRF.
Rib : Silver wire.
Hackle : Ginger cock palmered evenly along the body.
Back : Light brown turkey laid from tail to head.

SILVER SEDGE (DRY) (Courtney Williams)

Hook : 10 – 14.
Body : White floss silk.
Rib : Fine silver wire, and a sandy ginger cock's hackle.
Wings : From a landrail's wing (or substitute) tied low over the body.
Hackle : Sandy ginger cock wound over wing roots.

FLY PATTERNS FOR THE **DISCERNING FLY TIER**

SNIPE BLOA (WET) (Pritt)

Hook : 14 – 16.
Body : Straw coloured silk.
Hackle : Small feather from outside a jack snipe's wing.

SNIPE AND PURPLE (WET)

Hook : 14 – 16.
Body : Purple floss or tying silk.
Hackle : Small feather from outside a jack snipe's wing.

SOLDIER BEETLE (DRY) (Skues)

Hook : 14 D/E (Down Eyed)
Tying Silk : Hot orange.
Body : Bright red –orange seal's fur.
Wing Cases : Fibres from a cock pheasant's breast tied in at tail, brought down over body and tied in at head.
Hackle : Natural red cock, rather spare.

STONEFLY (Roger Woolley)

Hook : 11 long shank.
Body :
1) A mixture of two thirds dark olive seal's fur, and one third dirty yellow seal's fur.
2) Dark olive-brown raffia over a foundation of yellow wool also ribbed with yellow sowing silk.
Wings : The tips of four dark grizzle cock hackles tied low and flat over the back of the fly, and projecting well beyond the hook.
Hackle : Grizzle cock dyed brown-olive.

FLY PATTERNS FOR THE DISCERNING FLY TIER

STONEFLY

(John Veniard)

- Hook : 11 long shank.
Body : A mixture of dark hare's fur / dark yellow seal's fur.
Rib : Yellow silk, close wound at the tail end.
Wings : Four dark dun cock hackles tied low over the back and projecting beyond the hook.
Hackle : Dark grizzle cock wound in front of wings.
Alternative wings can be fibres from the dark part of a hen pheasant's wing quill, rolled and tied low over the body.

TUP'S INDISPENSIBLE (DRY) (R S Austin)

- Hook : 13 – 16.
Tail Whisks : Brassy or honey dun cock hackle fibres.
Body : Yellow silk at tail end, creamy pink dubbing for the remainder.
Hackle : Brassy or honey dun cock's hackle.

TUP'S INDISPENSIBLE (WET)

For the nymph imitation, the dubbing should be taken nearer to the tail, and the hackle should be a short fibred blue dun hen's hackle. Only two or three turns of yellow silk should show at the tail end.

WATER-HEN BLOA (WET) (Pritt)

- Hook : 14.
Body : Yellow silk, dubbed with the fur of a water-rat, alternatively, mole's fur.
Wings : Hackled feather from the inside of a moor-hen's wing.

FLY PATTERNS FOR THE DISCERNING FLY TIER

WINTER BROWN (DRY) (Roger Woolley)

Hook : 13 long shanked.
Body : Dark brown quill from the stem of a peacock's tail, dyed dark brown.
Wings : Two dark cree (brown grizzle) cock hackles dyed dun, and tied flat along the back.
Hackle : Dark brown dun cock's hackle.

Hackled Pattern.

Body : As for the winged pattern.
Hackle : A dark, well-rusted-blue dun cock hackle.

YELLOW DUN (DRY) (J R Harris)

Hook : 14.
Tail Whisks : Fibres from a ginger cock's hackle.
Body : Bright orange floss, or light orange quill.
Rib : Gold wire.
Wings : Bunch of fibres from a pale yellow cock's hackle tied so as to incline slightly forward.
Hackle : Ginger cock's hackle.

YELLOW HALO (DRY) (John Goddard)

Hook : 17 – 18.
Tying Silk : Yellow.
Body : A strip of thin, very pale yellow plastic P.V.C. wound over cream condor herl.
Hackles : A bright yellow cock hackle is trimmed to within 1/8" (3mm) of the stalk. Wind in two turns as a hackle. The main hackle of cream cock is then wound over this.
Tails : Honey dun cock four to six fibres.

FLY PATTERNS FOR THE **DISCERNING FLY TIER**

YELLOW EVENING SPINNER (J.R. Harris)

Hook : 14.
Tail : Fibres from a ginger cock's hackle.
Body : Light orange seal's fur on orange tying silk.
Rib : Gold wire.
Wing : Honey dun or pale ginger cock hackle fibres tied
"spent" or half "spent".

YELLOW SALLY (DRY) (Courtney Williams)

Hook : 14.
Body : Pale yellow wool, teased out before spinning on to
primrose tying silk.
Hackle : White cock's hackle dyed pale yellow.

Alternatively :

Body : Light canary quill or wool.
Hackle : Two pale ginger cock's hackles.

YELLOW UPRIGHT (DRY) (H.P.B.)

Hook : 14.
Tail Whisks : Eight to ten fibres from a pale honey blue dun
cock's hackle.
Body : Belly fur from a half-grown hedge-pig, blended
with a little rusty yellow seal's fur.
Rib : Fine gold thread.
Hackle : Good quality honey (or honey dun, if available)
cock's hackle, plenty of turns to ensure maximum
buoyancy.

FLY PATTERNS FOR THE **DISCERNING FLY TIER**

Words that may need to be described in more detail :-

Dun -	Brownish grey colour.
Grizzled -	Streaked or mixed with grey.
Herl -	The barb or barbs of a feather.
Poll -	Back part of the head.
Poult -	Young bird.
P.V.C. -	Polyvinyl chloride (Synthetic plastic).
Quill -	Any large stiff feather from the wing or tail of a bird.